



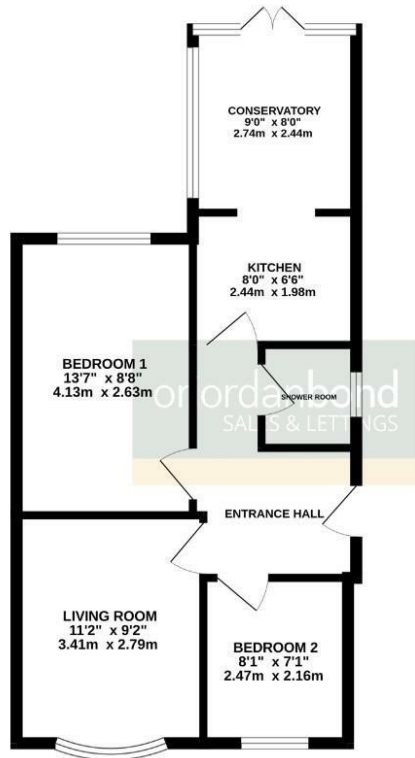
Sandhills Close

Kingsthorpe, Northampton

oriordanbond
SALES & LETTINGS



GROUND FLOOR
493 sq.ft. (45.8 sq.m.) approx.



TOTAL FLOOR AREA - 493 sq.ft. (45.8 sq.m.) approx.
Whilst every attempt has been made to ensure the accuracy of the floorplan contained herein, measurements of doors, windows, rooms and any other items are approximate and no responsibility is taken for any error, omission or misstatement. This plan is for illustrative purposes only and should be used as such by any prospective purchaser. The services, systems and appliances shown have not been tested and no guarantee as to their operability or efficiency can be given.
Made with Hozomek C2025

Sandhills Close

Kingsthorpe

NN2 8EB

PRICE £215,000

A well presented and extended two bedroom semi detached bungalow situated in a quiet cul-de-sac location within this popular area of Kingsthorpe. The property is within walking distance to local shops and amenities and a public bus stop.

Accommodation comprises; entrance hall, bay fronted living room, large master bedroom with views over the garden, good size second bedroom, an extended kitchen/diner with French doors leading to the rear garden and a wet room. Outside is a large and private rear garden with patio area leading to laid lawn and rear access providing off road parking, to the front of the property is a well kept garden and pathway leading to the front door. Further benefits include uPVC double glazing and gas radiator heating. (B/493/L)

- * Tenure - Freehold
- * Council tax band - B

Additional information

- Council Tax Band: B
- Energy Efficiency Rating: D

Viewing

Viewing strictly by appointment – details below

Disclaimer

O'Riordan Bond Estate Agents Limited has not tested apparatus, equipment, fittings or services and so cannot verify they are in working order. The buyer is advised to obtain verification from their solicitor or surveyor.

O'Riordan Bond Kingsthorpe Sales

01604 722007

kingsthorpe@oriordanbond.co.uk

